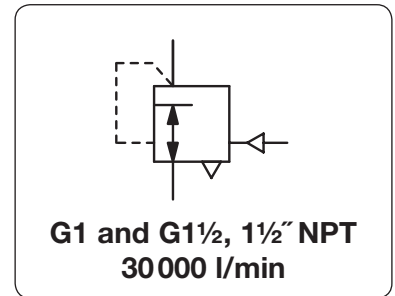


Precision Volume Booster with High Volume Flow

R200 / R201

Description	The volume booster amplifies the volume at a 1:1 ratio of pilot pressure to outlet pressure. The pilot pressure has no constant bleed. The bias spring at booster R200 generates a positive shift of the pressure range between pilot pressure and outlet pressure. Booster R201 with great relief capacity is a combination of two R200 boosters.	
Media	compressed air or non-corrosive gases	Supply pressure max. 17 bar
Pilot pressure	max. 10 bar, pilot port G $\frac{1}{4}$ at R200; $\frac{1}{4}$ " NPT at R201	
Accuracy	at supply pressure variation of 7 bar: < 20 mbar pressure deviation response sensitivity: 30 mbar	
Air consumption	without constant bleed	Relieving function relieving, optionally non-relieving
Relief capacity	1800 l/min at 0.3 bar overpressure above setpoint at R200, 9000 l/min at R201	
Gauge port	G $\frac{3}{8}$ on both sides of the body at R200; $\frac{1}{4}$ " NPT at R201	
Mounting position	any	
Temperature range	0 °C to 90 °C / 32 °F to 194 °F, for appropriately conditioned compressed air down to -40 °C / -40 °F	
Material	Body: aluminium die-cast Diaphragm: NBR/Buna-N	O-rings: PTFE Inner valve: stainless steel, cadmium-plated steel and brass



Dimensions			K _v value	Flow rate		Connection thread	Supply pressure max. bar	Pressure range bar	Order number
A	B	C		m ³ /h	l/min*1				

Booster with high flow rate									
supply pressure max. 17 bar, relieving, without constant bleed, transmission ratio 1:1									
141	198	57	11.4	1680	28000	G1	17	0...10	R200-08I
141	198	57	12.2	1800	30000	G1½	17	0...10	R200-12I

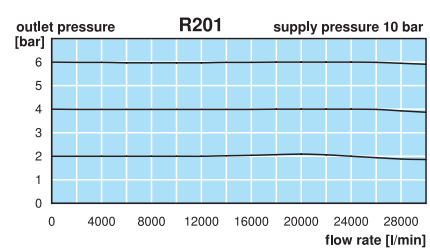
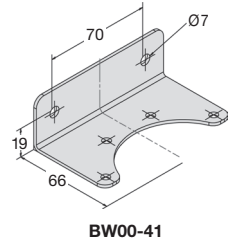
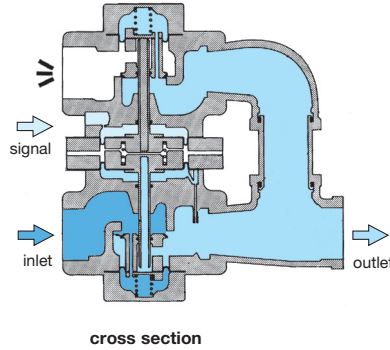
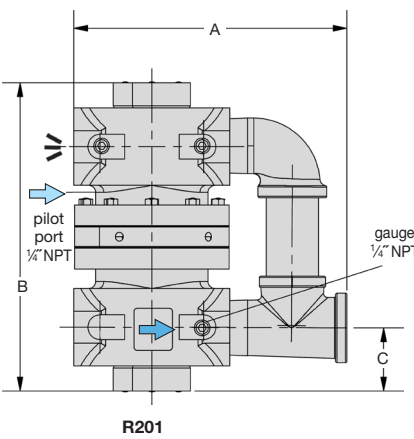
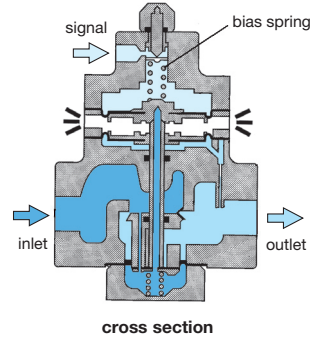
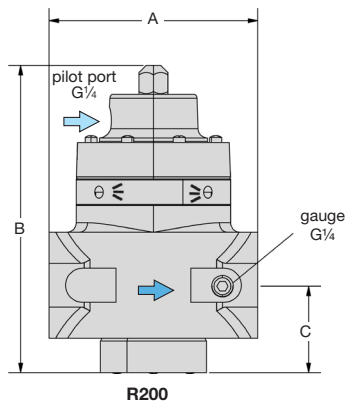
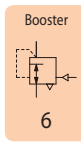
Booster with high exhaust rate									
supply pressure max. 17 bar, relieving, without constant bleed, transmission ratio 1:1									
250	240	57	12.2	1800	30000	1½" NPT	17	0...10	R201-12I

Special options, add the appropriate letter

NPT	connection thread	for R200	R200-...IN
non-relieving	without relieving function	for R200	R200-...IK
tapped exhaust	connection thread G $\frac{3}{8}$	for R200	R200-...IX12
FKM elastomer		for R200	R200-...IV

Accessories, enclosed

pressure gauge	Ø 63 mm, 0...*2 bar, G $\frac{1}{4}$	MA6302-...*2
adapter	$\frac{1}{4}$ " NPTm / G $\frac{1}{4}$ f	for R201 VP-0202N
mounting bracket	made of steel	for R200 BW00-41



*1 at 10 bar supply pressure and 2.8 bar outlet pressure
*2 02 = 0...2.5 bar, 04 = 0...4 bar, 06 = 0...6 bar, 10 = 0...10 bar, 16 = 0...16 bar

Gauges: see chapter for measuring devices www.aircom.net PDF CAD

Order example: **R200-08I**